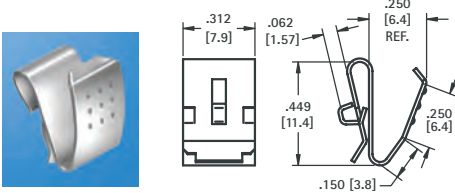


Refer to page 26  
for Battery Contact Layout & Mounting Details

- Economical and reliable contacts are ideal for molded cases with self contained battery compartments
- Single & dual contact designs available for "A" - "AA" - "AAA" - "AAAA" - "N" size batteries
- Solder "ear" to facilitate soldering of wire lead
- Unique spring tension contact adjusts to variations in battery length
- Reliable spring tension contacts assure low contact resistance
- Clips easily onto .060 (1.52) to .070 (1.78) thick panel edge
- Sharp barbs securely anchor contact in place

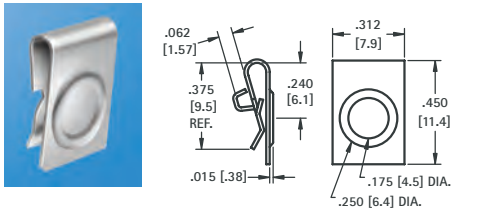
### For "A" - "AA"



**CAT. NO. 209**

**MATERIAL:** .012 (.30) thick Spring Steel, Nickel Plate

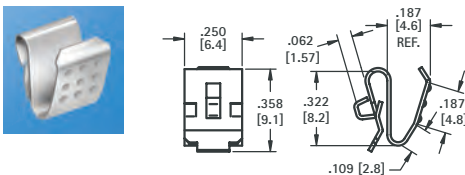
### For "A" - "AA"



**CAT. NO. 228**

**MATERIAL:** .010 (.25) thick Spring Steel, Nickel Plate

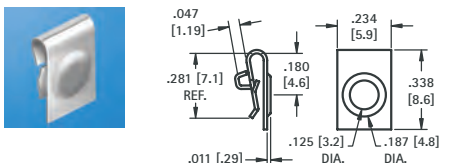
### For "AAA" - "AAAA" - "N"



**CAT. NO. 204**

**MATERIAL:** .010 (.25) thick Spring Steel, Nickel Plate

### For "AAA" - "AAAA" - "N"



**CAT. NO. 238**

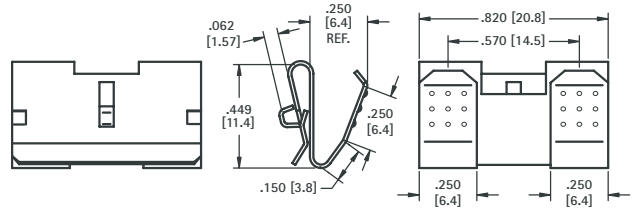
**MATERIAL:** .010 (.25) thick Spring Steel, Nickel Plate

### For "A" - "AA"

- The (2) two leaf contacts are held together by a web. This design offers greater stability.



**CAT. NO. 210**



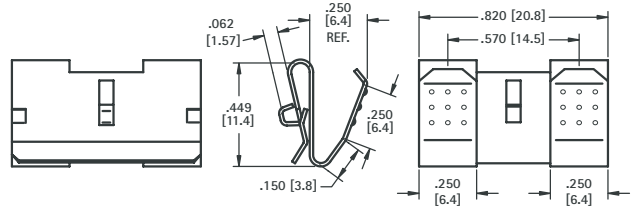
**MATERIAL:** .012 (.30) thick Spring Steel, Nickel Plate

### For "A" - "AA"

- The (2) two leaf contacts are separate, allowing a divider between the batteries.



**CAT. NO. 288**



**MATERIAL:** .012 (.30) thick Spring Steel, Nickel Plate

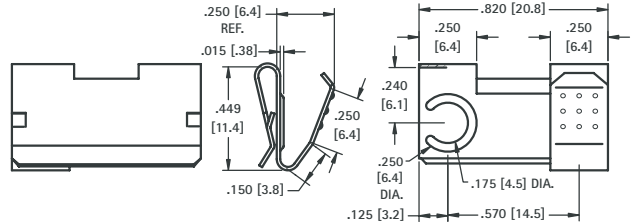
### For "A" - "AA"



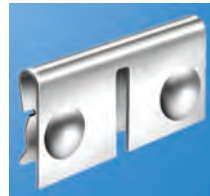
**CAT. NO. 290** Left (shown)

**CAT. NO. 291** Right

**MATERIAL:** .012 (.30) thick Spring Steel, Nickel Plate

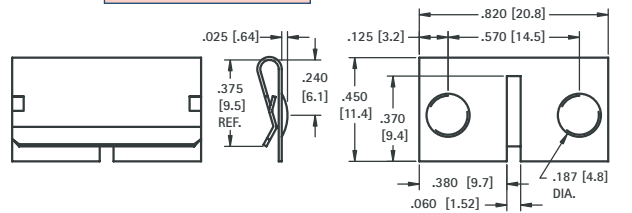


### For "A" - "AA"



**CAT. NO. 292**

**MATERIAL:** .010 (.25) thick Spring Steel, Nickel Plate

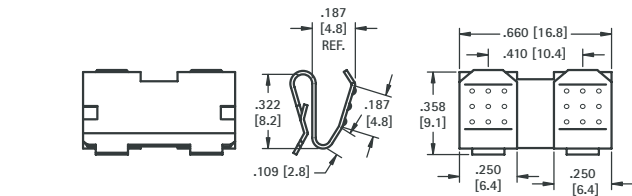


### For "AAA" - "AAAA" - "N"



**CAT. NO. 202**

**MATERIAL:** .010 (.25) thick Spring Steel, Nickel Plate

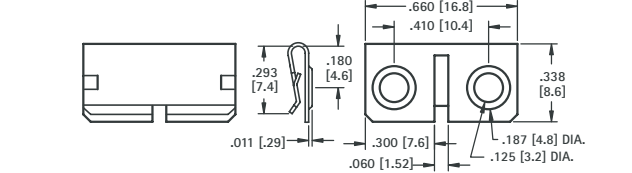


### For "AAA" - "AAAA" - "N"



**CAT. NO. 294**

**MATERIAL:** .010 (.25) thick Spring Steel, Nickel Plate

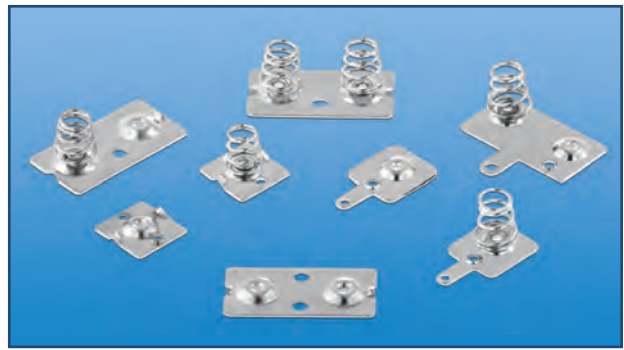


For "A" - "AA"

- Economical and reliable contacts are ideal for molded cases with self contained battery compartments
- Single and dual contact designs available for "A" & "AA" size batteries
- "Solder tab" design for either wire lead or PC mounting
- Unique spring contacts adjust to variations in battery lengths
- Reliable spring contacts assure low contact resistance and a dependable connection
- Space saving, economical, excellent mechanical construction

MATERIAL:

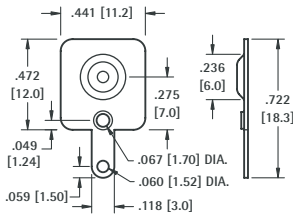
Plate: .020 (.51) thick Steel, Nickel Plate Spring: Spring Steel, Nickel Plate



Refer to page 27 for Battery Contact Layout & Mounting Details

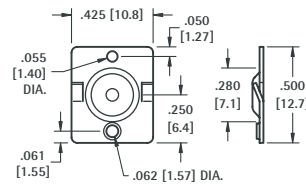
For "A" - "AA"

(+) POSITIVE BUTTON WITH TAB



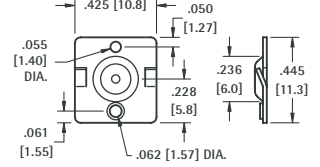
CAT. NO. 5223

(+) POSITIVE BUTTON



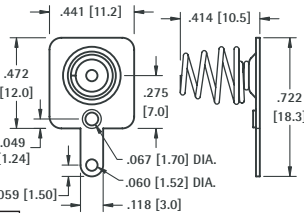
CAT. NO. 5221

(+) POSITIVE BUTTON



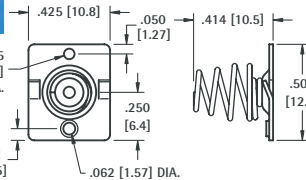
CAT. NO. 5224

(-) NEGATIVE SPRING WITH TAB



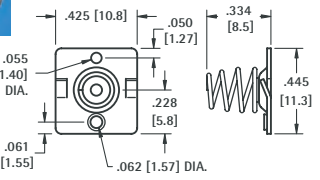
CAT. NO. 5201

(-) NEGATIVE SPRING



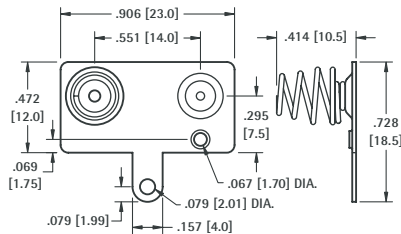
CAT. NO. 5222

(-) NEGATIVE SPRING



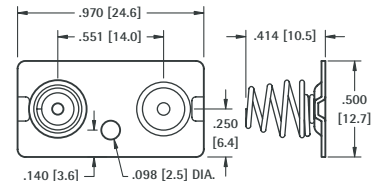
CAT. NO. 5202

DUAL CONTACTS WITH TAB



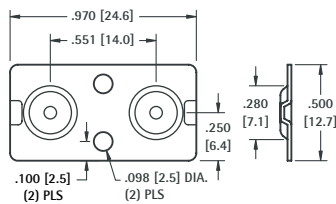
CAT. NO. 5211

DUAL CONTACTS



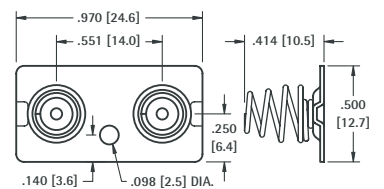
CAT. NO. 5212

DUAL BUTTON CONTACT



CAT. NO. 5227

DUAL SPRING CONTACT



CAT. NO. 5228

# SPRING & BUTTON CONTACTS

For "AAA" - "N"

- Economical and reliable contacts are ideal for molded cases with self contained battery compartments
- Single and dual contact designs available for "AAA" & "N" size batteries
- "Solder tab" design for either wire lead or PC mounting
- Unique spring contacts adjust to variations in battery lengths
- Reliable spring contacts assure low contact resistance and a dependable connection
- Space saving, economical, excellent mechanical construction

**MATERIAL:**

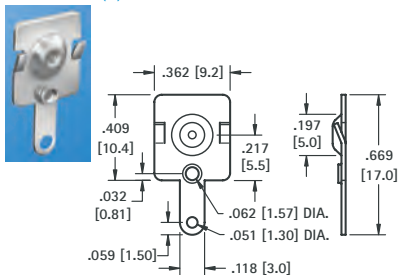
**Plate:** .020 (.51) thick Steel, Nickel Plate **Spring:** Spring Steel, Nickel Plate



Refer to page 27 for Battery Contact Layout & Mounting Details

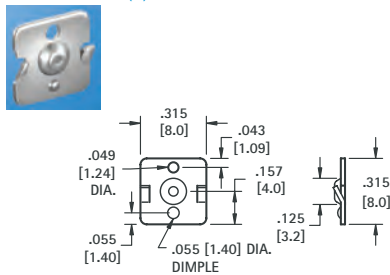
For "AAA" - "N"

(+) POSITIVE BUTTON WITH TAB



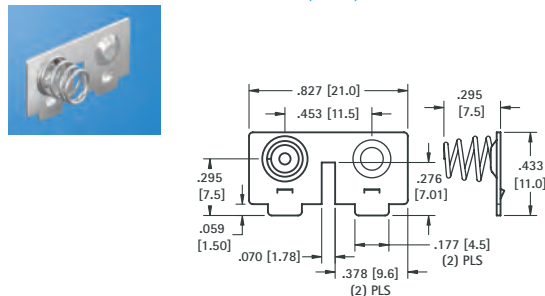
CAT. NO. 5226

(+) POSITIVE BUTTON



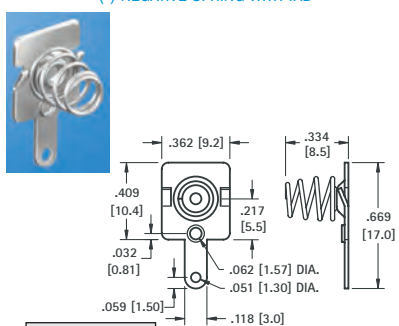
CAT. NO. 5225

DUAL CONTACT (RIGHT)



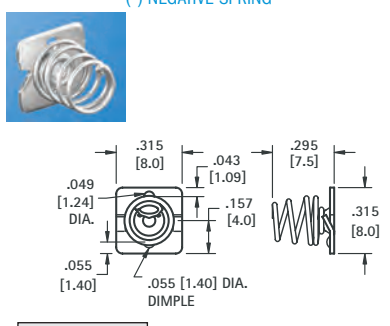
CAT. NO. 5213

(-) NEGATIVE SPRING WITH TAB



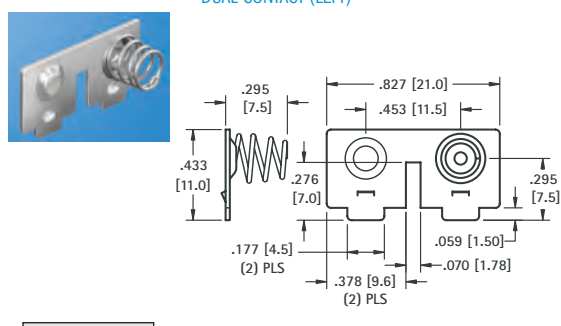
CAT. NO. 5204

(-) NEGATIVE SPRING



CAT. NO. 5203

DUAL CONTACT (LEFT)

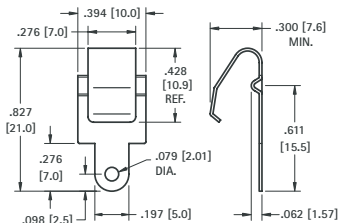


CAT. NO. 5214

## LEAF-SPRING CONTACTS

For "A" - "AA" - "9V"

Refer to page 27 for Battery Contact Layout & Mounting Details



CAT. NO. 5209

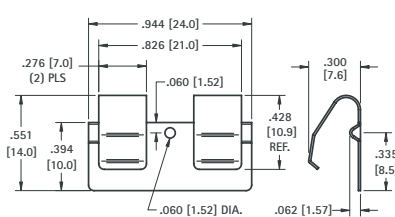
**MATERIAL:** .012 (.30) thick Phosphor Bronze, Nickel Plate



CAT. NO. 5208

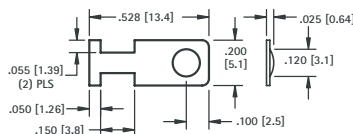
**MATERIAL:** .012 (.30) thick Phosphor Bronze, Nickel Plate

For "A" - "AA"



For "AAA" - "AAAA" - "N" - "12V"

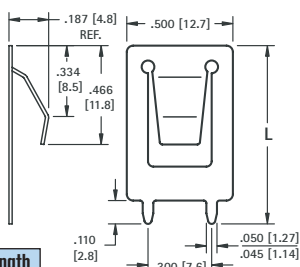
- Designed for remote control applications



CAT. NO. 230-1

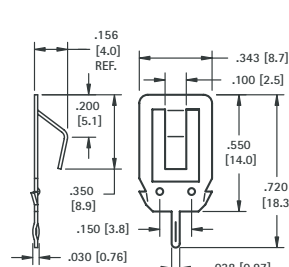
**MATERIAL:** .008 (.20) thick Spring Steel, Tin Nickel Plate

UNIVERSAL BATTERY SIZES



CAT. NO.	(L) Length
109-2	.840 (21.3)
109-3	1.000 (25.4)

**MATERIAL:** .012 (.30) thick Spring Steel, Nickel Plate



CAT. NO. 108-2

**MATERIAL:** .012 (.30) thick Spring Steel, Tin Nickel Plate

